

50

Wyrys z mapy  
Skala 1:1000

Województwo: lubuskie

Powiat: żarski

Jednostka ewidencyjna: Lubsko miasto

Obręb: 5

49/1

53/17

53/18

53/2

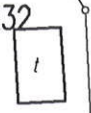
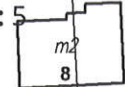
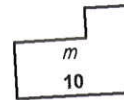
251

232

348/5

348/6

348/7



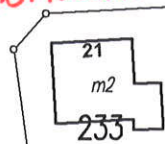
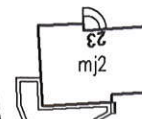
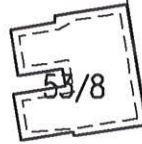
348/4

53/7

53/4

UL. JARZĘBINOWA

348/8



234

3/8

53/9

53/10

53/11

348/10

348/9

326/2

252

25'

348/12

348/11

53/15

53/14

53/13

53/12

28<sup>m2</sup>

m 26

348/20

348/21

348/22

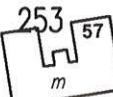
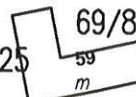
53/16

UL. WINCENTEGO WITOSA

341/1

348/19

349/25



254

348/18

348/23

349/4

349/5

349/6

69/9

263

~~Cel wydziałowy 62/2 wy~~

~~Sp. z o.o. (s) - Kamil Zaleski, dnia 16.01.2020r.~~

67/1

349/1

349/2

349/3

349/10

349/9

349/8

349/7

m2

69/10



327